



# Friends of Belper Parks

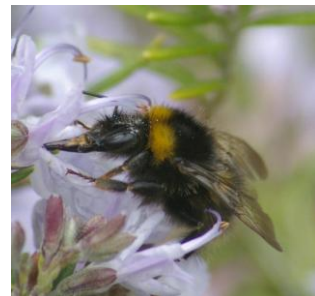
Belper Parks Local Nature Reserve  
St. John's Chapel, The Butts, Belper, Derbys.  
[www.belperparks.info](http://www.belperparks.info)

## **WILDLIFE GARDENING COURSE**

**WEDNESDAY 14TH JULY 2010**

**10:00 ST JOHNS CHAPEL**

**WILDLIFE GARDENING IS ALL ABOUT HELPING THE ENVIRONMENT AND OURSELVES BY PROVIDING WILDLIFE SUCH AS BEES AND BUTTERFLIES ETC. WITH FOOD AND A SAFE PLACE TO LIVE. WILDLIFE GARDENING IS EASY, CAN GIVE A LOT OF PLEASURE, DOES NOT REQUIRE A GREAT DEAL OF TIME, IS NOT LABOUR INTENSIVE BUT CAN BE A MATTER OF LIFE OR DEATH FOR THE BEES AND BUTTERFLIES THAT WE DEPEND UPON FOR THE FOOD WE EAT.**



**THE COURSE WILL BE RUN BY JENNY STEEL\* WHO IS ONE OF THE COUNTRY'S LEADING EXPERT IN WILDLIFE GARDENING. FOR MORE INFORMATION ABOUT JENNY PLEASE GO TO HER WEBSITE [WWW.WILDLIFE-GARDENING.CO.UK](http://WWW.WILDLIFE-GARDENING.CO.UK) OR GOOGLE JENNY STEEL.**

**THE COST OF THE COURSE IS £50 THIS INCLUDES A BUFFET LUNCH AND AS MUCH TEA OR COFFEE AS YOU CAN DRINK. PLACES ARE LIMITED TO 25. REFUNDS:- CANCELLATION BEFORE 1<sup>ST</sup> JUNE – 50%**

**IF PAYMENT IS RECEIVED AFTER THE COURSE IS FULL, IT WILL BE RETURNED IMMEDIATELY.**

**NAME :**  
**ADDRESS:**

**TELEPHONE :**  
**EMAIL:**

**RETURN THIS FORM WITH YOUR PAYMENT TO :-**

**FRIENDS OF BELPER PARKS ,C/O BELPER TOWN COUNCIL, ST JOHNS CHAPEL, THE BUTTS, BELPER DE56 1HX  
MAKE CHEQUES PAYABLE TO - FRIENDS OF BELPER PARKS**

\* Jenny Steel is an Oxford University educated Plant Ecologist, experienced lecturer and tutor in adult education, a professional gardener, photographer and former plant nursery woman, with more than 20 years experience of writing about and teaching organic gardening, wildlife gardening and natural history topics. She has appeared on Gardener's World with Alan Titchmarsh and presented a series of items on the BBC 2 gardening show, How Does Your Garden Grow. She has worked with a great variety of organisations including the Royal Horticultural Society, Natural England, Atropos, Ernest Charles, the Adult Residential Colleges Association (ARCA), Growing Native, Usborne Books, Complete Gardens, Osmia Publications, and several of the Wildlife Trusts. She is currently working with the wild bird food company Haiths, Oxfordshire County Council and the Emmy Award winning film company Panache Productions who are making a film about her wildlife garden.

Despite the above Jenny is a very down to earth lady (no pun intended) who is very easy to talk to.

Belper Parks covers an area of 50 acres and is the largest Local Nature Reserve owned by Amber Valley Borough Council. Belper Parks is known locally as 'The Parks' and is a mix of grassland, woodland and a 5 acre wildflower meadow. The Parks is bounded by Parkside, Mill Lane, Park Road, Holbrook Road, The Fleet, and the Market Place. Coppice Car Park is adjacent to the Parks, providing ample free parking. Access to the car park is through the Market Place.